

KEIM Granital®



**The classic solution
for reliable architectural protection**

Approved!

**PREMIUM
is our Standard.**





KEIM Granital's mineral base ensures the best possible quality and service life

Unique mineral-based product quality

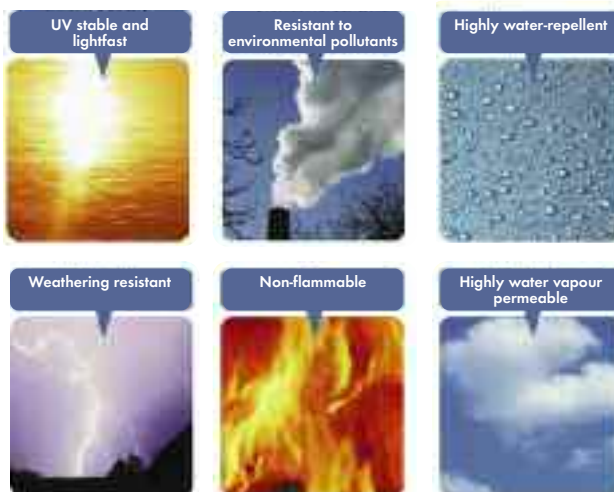
Extremely resistant, particularly environmentally friendly, highly economical – KEIM Granital, KEIM's DIN silicate emulsion paint, really is the byword for reliability in architectural protection systems. This is due to KEIM Granital's silicate formulation: the water glass binder penetrates deep into the substrate, reacting chemically to create an indissoluble bond between the paint and underlying substrate.

A perfectly tailored formulation

A perfectly tailored combination of high-quality raw materials, such as pure inorganic pigments, mineral extenders and liquid potassium silicate, means that contractors, painters and decorators can expect extremely high product quality, reliability of application and durability.

Available in more than 270 standard colour shades, KEIM Granital is ideally suited to the widest possible range of application methods, so offering an unlimited range of possibilities for distinctively individual and creative exterior wall designs.

More than 270 standard colour shades





KEIM Granital – competence and experience mean reliability

**Accumulated
know-how leads to
maximum reliability**

KEIM Granital is the culmination of over 130 years of experience and research and development know-how in mineral architectural protection products. Decades of development and professional backup explain KEIM Granital's richly deserved position as the number one mineral paint.

**Tried and tested
worldwide**

Many years of use in all the world's different climatic zones have provided reliable and convincing evidence of KEIM Granital's incomparable quality. From Finland to South Africa, from California to China, Granital-coated exterior walls of new and existing structures are the proof of KEIM Granital's unique quality.



Photos:

*Top:
Housing in
Steinheim/Murr*

*Small photo:
Hotel "Baita Ortler",
Stelvio Pass*



KEIM Granital – environmentally and economically unbeatable

Granital protects the environment

An unbiased study by the renowned Trischler & Partner institute clarifies KEIM Granital's environmental strengths. The result is clear: KEIM Granital is far superior to an organically bound coating in all the investigated aspects of possible environmental impact over the render's entire service life (50 years). KEIM Granital is listed in the "DGNB Navigator", a database of German Sustainable Building Council (DGNB).



An economic comparison gives precisely that unambiguous result. A KEIM Granital coating has an average service life which is around twice as long as that of a conventional non-mineral coating. Granital exterior walls thus have to be repainted only half as often, so saving money. Not only that, but costly stripping of the existing coating is wholly unnecessary when repainting an exterior wall coated with Granital.

Quality pays

IN A NUTSHELL:

Investing in KEIM Granital indicates not only environmental but also economic far-sightedness.



„Granital is simply the best“ -

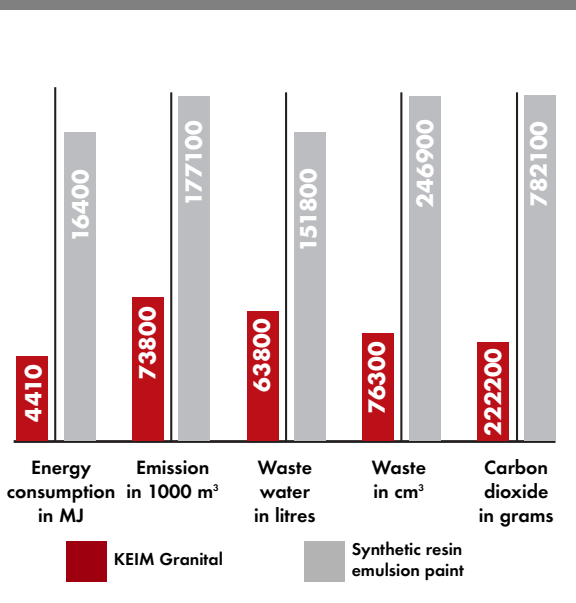
Master painter and decorator Uwe Hoff, referring to the KEIM Granital system

Uwe Hoff was introduced to KEIM Granital when he was training.

His opinion is that „Granital is simply the best. In fact, I no longer use any other products for exteriors. What really impresses me about Granital is its reliable product quality and in particular its economic advantages, which easily convince my customers.“

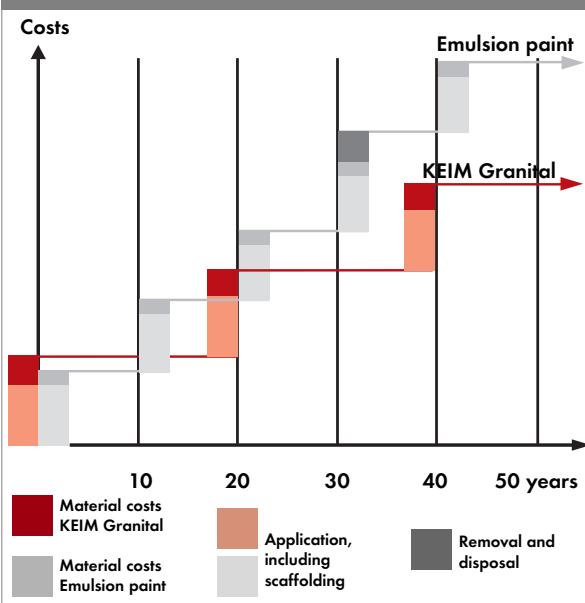
Environmental impact

arising from painting the exterior walls of a detached house (200 m²) over the entire life of the render (50 years):



Costs of exterior wall coating

over the entire life of the render (50 years)





KEIM Granital – a reliable product system

KEIM Granital system components

KEIM Granital

Ready-to-use silicate emulsion paint to VOB/C DIN 18363 sect. 2.4.1.

KEIM Granital-Grob

Filled silicate emulsion paint to VOB/C DIN 18363 sect. 2.4.1. for priming coats on difficult, mineral substrates.

KEIM Fixativ

Purely silicate diluent without organic additives.

KEIM Spezial-Fixativ

Silicate diluent with small amounts of organic additives.

KEIM Contact-Plus

Highly filled silicate based priming coat for renovation work for levelling synthetic resin-bound existing coatings and/or for closing cracks, on the basis

of VOB/C DIN 18363 sect. 2.4.1., max. grain size 0.5 mm.

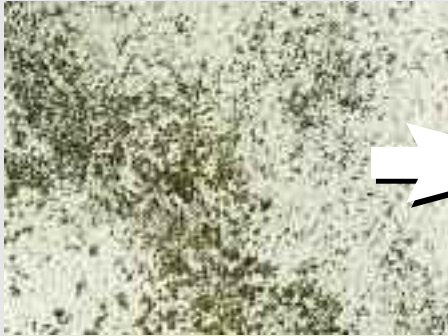
KEIM Contact-Plus-Grob

Highly filled silicate based priming coat for renovation work for levelling synthetic resin-bound existing coatings and/or for closing cracks, on the basis of VOB/C DIN 18363 sect. 2.4.1., max. grain size 1 mm.

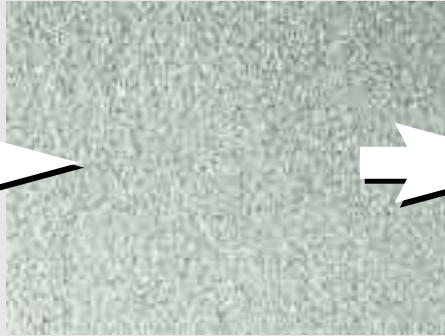
Photo:
Castle Linderhof

Examples of application

Weathered emulsion paint



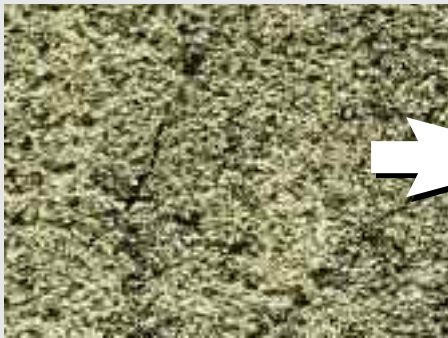
Priming coat for levelling an existing organic coating with KEIM Contact-Plus



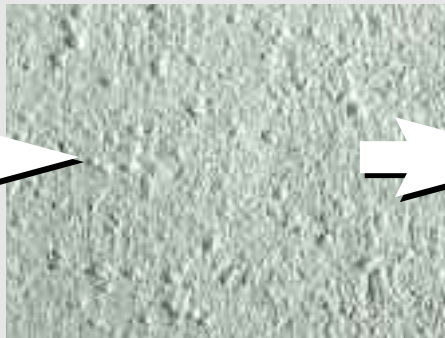
Intermediate or final coating with KEIM Granital



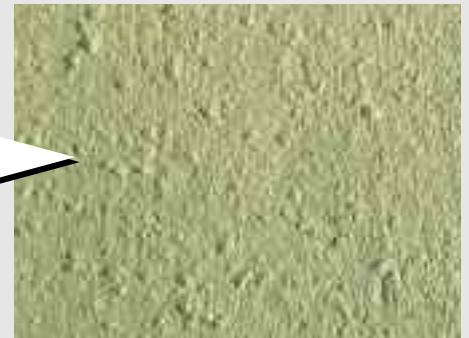
Existing render with cracks



Priming coat for closing cracks with KEIM Contact-Plus-Grob



Intermediate or final coating with KEIM Granital



KEIM Contact-Plus – the ideal solution for difficult substrates

Problem-free levelling of existing coatings

KEIM Contact-Plus products are silicate-based crack-filling priming coats to DIN 18363 sect. 2.4.1. with the addition of pure acrylate, glass fibres and high-quality extenders in balanced grain sizes and shapes.

KEIM Contact-Plus

is suitable for levelling synthetic resin-bound existing coatings and is used if the organically bound existing coating cannot be removed for reasons of environmental impact, non-removability or because of excessively high costs AND/OR for levelling off slight differences in texture, for substrate equalisation and for closing fine, immobile hairline cracks up to a maximum width of 0.5 mm.

KEIM Contact-Plus-Grob

is also suitable for levelling synthetic resin-bound existing coatings AND/OR for levelling off differences in texture, for substrate equalisation and for closing fine, immobile cracks up to a maximum width of 1.0 mm.



KEIM Granital – overview of key features:

- Maximum weathering resistance leading to unequalled service life and extremely good economic performance
- Resistant to harmful environmental influences, extremely environmentally friendly during production, application and service
- Very good water-repellency; ideal moisture balance
- System components perfectly tailored to one another; wide range of applications
- Tried and tested worldwide; very reliable

KEIMFARBEN
GmbH

Keimstraße 16
D-86420 Diedorf
Fon +49 (821) 4802-0
Fax +49 (821) 4802-210

www.keimfarben.de

Frederik-Ipsen-Straße 6
D-15926 Luckau
Fon +49 (35456) 676-0
Fax +49 (35456) 676-38

info@keimfarben.de

KEIMFARBEN
consistently mineral